

**Ceiling mount commercial air cleaner  
featuring Hepa-Flow CPZ™ Technology  
with three-speed remote switch**

**F111 provides up to 1250 CFM, is a High Efficiency, Cost Effective, Quieter, Custom Modular System for Tough Commercial and Light Industrial Applications.**

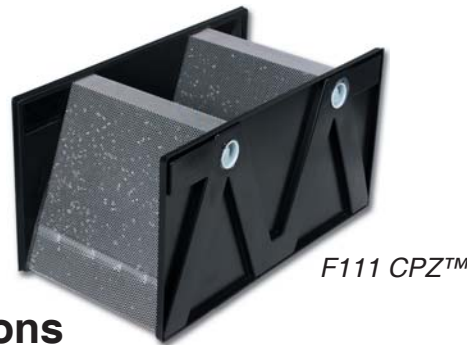
- The F111 Media Air Cleaner is equipped with a choice of HEPA filter along with 40 pounds of CPZ™ to adsorb gases and odors as they pass through the unit. F111 provides the highest amount of CPZ™ then any other competitive unit of its size in the market.
- Choose 99.97% HEPA filter wherever maximum particle efficiency is required, for instances Clean Rooms, Laboratories, Health & Critical Markets and similar applications.
- The solid state, Three-Speed Remote Switch allows controlling air flow and sound level. It can be mounted adjacent to the unit on the ceiling or on the wall for remote operation.
- The F111 fits neatly in a 2' x 4' ceiling tile, hiding the cabinet over the ceiling. To match your décor, the grill is available in White or Black color.

The grill swings down easily for filter replacement and is removable for easy cleaning.

- Efficient Coanda airflow ensures the purified air is re-circulated evenly in the room, eliminating stuffy air pockets. Coincidentally, it also reduces cycling of the HVAC system by re-circulating conditioned air.

**Particles aren't always the problem**

Anywhere gases, odors and volatile organic compounds (VOCs) are a part of doing business – you'll want an air cleaner that includes CPZ™ sorbent media. Depending on your particular application, we can adjust the CPZ™ formula to solve your specific need. Honeywell CPZ™ sorbent media is specifically formulated for maximum efficiency at reducing a broad range of gases-odors-VOCs.



**Applications**

You will find the F111 deployed in spaces where particle counts are typically high and odors are a part of doing business.

- Print Shops
- Offices
- Computer Rooms
- Critical and Healthcare facilities
- Spas and Salons
- Funeral Homes
- Casinos
- Restaurants
- Bingo Halls & Fraternal Clubs
- Employee Lounges
- Gyms and Locker Rooms
- Nursing Homes
- Dental Offices & Labs
- Veterinary Clinics, Kennels
- Hospital Waiting Rooms
- Residences & Homes
- Energy Savings Applications
- Restrooms
- ...and more



Ask for more information about our Clean Air Facility Program.



**F111 Series 3 Specifications**

Models*	Filters		Airflow (CFM)			Electrical Rating	Dimensions
	Media	CPZ (2) - 40 lbs	High	Medium	Low		
F111A1253W-3S	1 - 95% ASHRAE	NO	1250	800	450	120V / 60Hz	Length : 46.75"
F111A1063W-3S	1 - 99.97% HEPA	NO	950	775	450		
F111C1073W-3S	1 - 95% ASHRAE	YES	1150	825	450		Width : 22.75"
F111C1003W-3S	1 - 99.97% HEPA	YES	825	700	450		
F111C1012W-3S	1 - 95% at 0.3 Micron	YES	1125	825	450		
F111A2253W-3S	1 - 95% ASHRAE	NO	1125	700	475	230V / 50Hz	Height : 22.5"
F111A2007W-3S	1 - 99.97% HEPA	NO	900	600	400		
F111C2073W-3S	1 - 95% ASHRAE	YES	1025	675	450		
F111C2003W-3S	1 - 99.97% HEPA	YES	825	550	375		
F111C1053W-3S	1 - 95% at 0.3 Micron	YES	950	625	425		

\* For Black Grill Change 'W' to 'B' in the model number

**Air-Pure Systems**

16873 Fish Point Rd SE  
 Prior Lake, Minnesota 55372-1714  
 Telephone: (800) 998-1919  
 Fax: (800) 221-3248  
 Internet: [www.cleanairfacility.com](http://www.cleanairfacility.com)

The Honeywell trademark is used under license from Honeywell International Inc. by Air-Pure Systems.

Honeywell International Inc. makes no representations or warranties with respect to this product.

